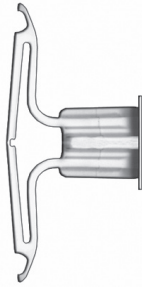


VERSA-TOGGLE



AVAILABLE MATERIALS

- High strength nylon

FEATURES/ADVANTAGES

- Excellent for light loads in gypsum board
- Fast, easy installation

APPROVALS/LISTINGS

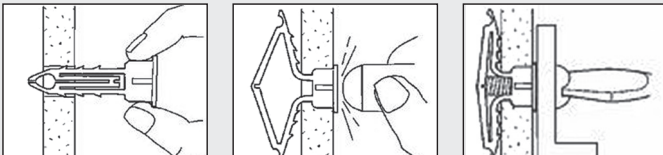
- G.S.A. Spec FF-B-588D, Type IV

ORDER DETAIL

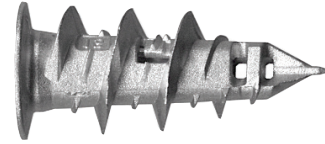
| Order Code | Size | Hole Diameter | Wall Thickness | Screw Size | Box Qty. | Master Qty. |
|------------|-------|---------------|----------------|------------|----------|-------------|
| 8512000 | Short | 5/16" | 1/2" | 6-8 | 100 | 800 |
| 8578000 | Long | 5/16" | 1" | 8-12 | 100 | 800 |

INSTALLATION

- 1 Drill 5/16" dia. hole, squeeze toggle wings flat and push into hole.
- 2 Tap flush with wall.
- 3 Put fixture in place, insert screw and tighten until secure.



SELF-DRILLING WALLBOARD



AVAILABLE MATERIALS

- Zinc diecast alloy
- High strength nylon

CONCERNS

- Hollow wall anchoring only

FEATURES/ADVANTAGES

- Works in any wallboard thickness
- Can be easily backed out
- Low profile head
- Fast, easy installation
- Zinc Anchor can be set with a 1/4" hex bit tip

ORDER DETAIL

| 1/2" Drywall | | | | | | |
|--------------|-------------|---------------------------|---------|-------|----------|-------------|
| Order Code | Description | Maximum Fixture Thickness | Tension | Shear | Box Qty. | Master Qty. |
| 8561000 | Plastic | 3/4" | 81 | 150 | 100 | 1200 |
| * 8561100 | Plastic Kit | 3/4" | 81 | 150 | 1 | 12 |
| 8571000 | Zinc | 3/4" | 90 | 150 | 100 | 1200 |
| * 8571100 | Zinc Kit | 3/4" | 90 | 150 | 1 | 12 |

*Includes 50 #8 x 1-1/4" Screws and 50 Anchors

INSTALLATION

- 1 Place driving tool in anchor and puncture wallboard with anchor point.
- 2 Screw anchor clockwise applying forward pressure until head is flush to wall.
- 3 Place fixture over hole and tighten #8 or #10 sheet metal screw.

