

AVAILABLE MATERIALS

- Nylon Tap-It body with:
 - Carbon steel nail, zinc plated
 - Aluminum nail, bulk only
 - Zinc plated nail available in bulk pack

FEATURES/ADVANTAGES

- Light to medium loads under dead, variable, or vibratory conditions in solid or hollow base materials
- Specially tempered high strength nylon. Functions in an effective temperature range from -40°F to +170°F
- Quick and easy to install
- Exceptionally resistant to vibration

APPROVALS/LISTINGS

- G.S.A. Spec FF-S-325C, Group V, Type 2, Class 4

AVAILABLE MATERIALS

- High strength nylon

FEATURES/ADVANTAGES

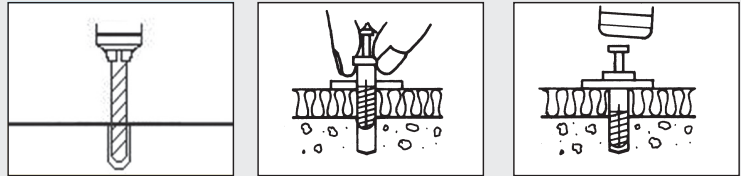
- Acts as a bearing surface when anchoring through soft material into concrete or other suitable base materials

ORDER DETAIL

Order Code	Hole I.D.	Washer O.D.	Box Qty.
5901000	1/4"	1-1/2"	100

INSTALLATION

- 1 Drill hole same diameter as "Tap-It" shell.
- 2 Clean hole of debris.
- 3 Insert shell through washer and into object to be fastened, then into the hole.
- 4 Tap nail until flush with nylon head.



ORDER DETAIL

Ultimate Tensile & Shear Loads in Lbs.
Concrete Strength (P.S.I.)
3000 P.S.I.

Order Code	Hole/Anchor Diameter / Length	Head Style Diameter	Minimum Hole Depth	Minimum Embedment	Tension	Shear	Box Qty.	Master Qty.
Flat Head								
5650000	1/4" x 1"	FLT-7/16"	1-1/4"	3/4"	261	884	100	1200
5750000	1/4" x 1-1/2"	FLT-7/16"	1-3/4"	1"	320	920	100	800
5850000	1/4" x 2"	FLT-7/16"	2-1/4"	1"	325	972	100	800
Round Head								
4630000	3/16" x 1"	RND-3/8"	1-1/4"	3/4"	283	713	100	1200
* 4730000	3/16" x 1-1/2"	RND-3/8"	1-3/4"	1"	335	887	100	1200
5630000	1/4" x 1"	RND-7/16"	1-1/4"	3/4"	261	884	100	1200
5730000	1/4" x 1-1/2"	RND-7/16"	1-3/4"	1"	320	951	100	1200
5830000	1/4" x 2"	RND-7/16"	2-1/4"	1"	325	972	100	300
Mushroom Head								
4460000	3/16" x 3/4"	MUSH-9/16"	1"	5/8"	283	793	100	1200
4660000	3/16" x 1"	MUSH-9/16"	1-1/4"	3/4"	370	687	100	1200
5460000	1/4" x 3/4"	MUSH-9/16"	1"	5/8"	261	884	100	1200
5660000	1/4" x 1"	MUSH-9/16"	1-1/4"	3/4"	261	884	100	1200
5760000	1/4" x 1-1/2"	MUSH-9/16"	1-3/4"	1"	320	951	100	800
5860000	1/4" x 2"	MUSH-9/16"	2-1/4"	1"	253	590	100	500
* 5160000	1/4" x 3"	MUSH-11/16"	3-1/4"	1-1/4"	261	884	100	500
* 5260000	1/4" x 4"	MUSH-11/16"	4-1/4"	1-1/4"	261	884	100	300

*Unassembled

INSTALLATION

- 1 Drill hole same diameter as "Tap-It" shell and slightly deeper than fastener length in solid material.
- 2 Clean hole of debris.
- 3 Insert shell through object to be fastened and into the hole.
- 4 Tap nail until flush with nylon head.

